



1, Flat 20 Hampshire Street, London, NW5 2TE

£3,250 Per Month

Flat 20 Hampshire Street, London NW5 2TE

A stylish, contemporary two bedroom flat set within a well-maintained, new development in Kentish Town, that has been finished to a high standard. The property includes an open plan living and kitchen area flow together seamlessly. Both double bedrooms come fitted wardrobes and utility room for extra storage. The modern bathroom is fully tiled and oozing with warm light, giving a cozy feel. The private terrace is a great spot to unwind after a busy day.

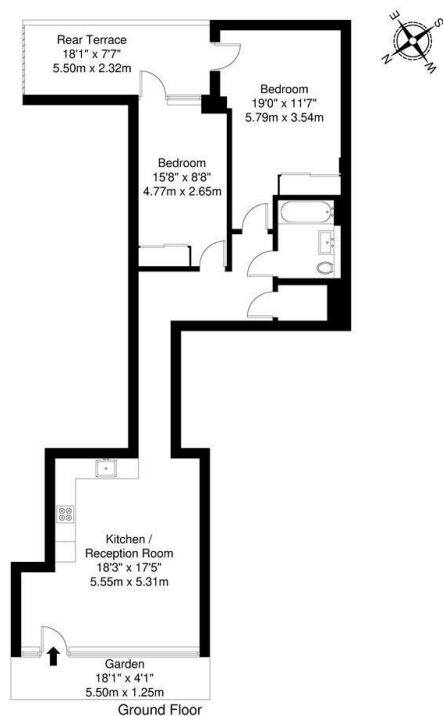
Located in the heart of Kentish Town, and close to Kings Cross, you're spoilt for choice for entertainment, restaurants, shopping and transport links, including Thameslink and Eurostar. Kentish Town Station is within a 10 minute walk of the property.

Available now.

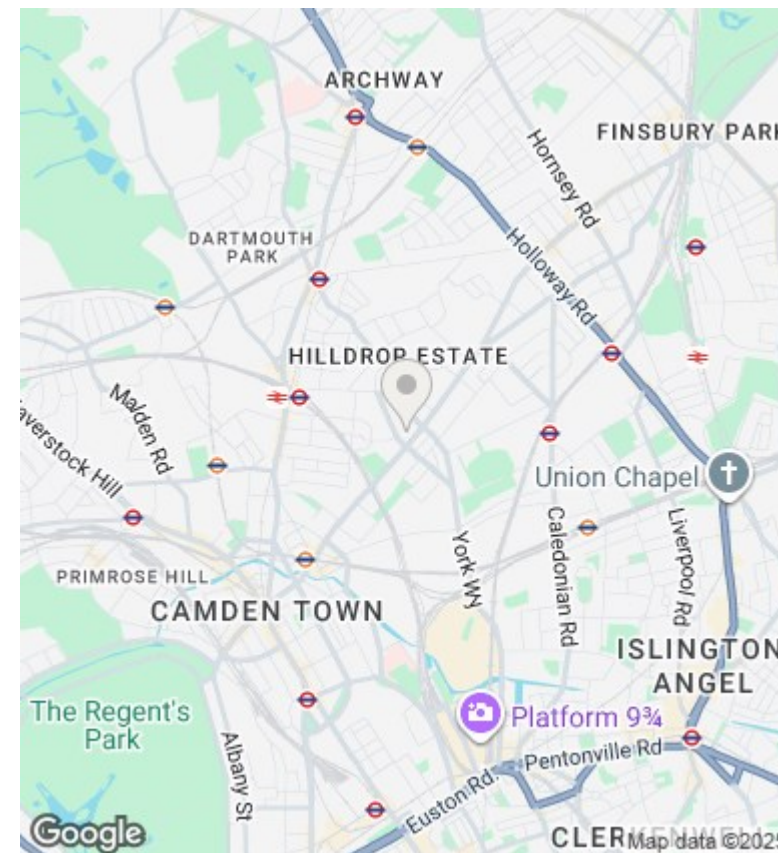


Council Tax Band: New Build





Hampshire Street, NW5
 Total Gross Internal Area = 74.7 sq m / 804 sq ft
 All Measurements are approximate and for identification guideline purposes only, not to scale.
 Compliant with the RICS code of measuring practice



Directions

Viewings

Viewings by arrangement only. Call 02073593191 to make an appointment.

Council Tax Band

New Build

Energy Efficiency Rating		
	Current	Potential
Very energy efficient - lower running costs		
(92 plus) A		
(81-91) B	82	82
(69-80) C		
(55-68) D		
(39-54) E		
(21-38) F		
(1-20) G		
Not energy efficient - higher running costs		
England & Wales	EU Directive 2002/91/EC	

